



**Electrolux**  
PROFESSIONAL

**Floor Drains and Collecting Tanks**  
**Floor Drain with Stainless Steel Grate**  
**and Central Drain - Horizontal outlet**  
**400x500 mm**

ITEM # \_\_\_\_\_

MODEL # \_\_\_\_\_

NAME # \_\_\_\_\_

SIS # \_\_\_\_\_

AIA # \_\_\_\_\_



**328066 (FDD4050)**

Floor drainage channel with  
s/s grate, central drain -  
horizontal outlet, 400x500

### Short Form Specification

**Item No.** \_\_\_\_\_

Constructed in 304 AISI stainless steel. Collecting tank with central siphon and horizontal drain pipe. Anti-slip mesh grate.

### Main Features

- Easy to install.
- Anti-odour syphon.
- Removable waste blocking filter.
- Rag bolt for floor fixing.
- Easy to inspect for any possible waste removal action.
- Electrochemical finishing gives grids a bright appearance.
- Ideal for any drain solution, particularly suggested for great amounts of water drained during cleaning operations.

### Construction

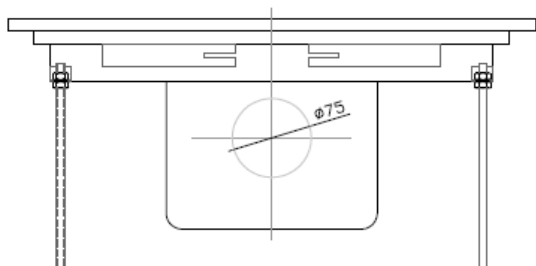
- Adjustable leveling feet.
- Anti-slip mesh 25x25 mm grating, h=25 mm, 1.5 mm in thickness.
- Collecting tanks available with horizontal drain pipe.
- Constructed entirely in 304 AISI stainless steel.
- Collecting tanks with central siphon.

**APPROVAL:** \_\_\_\_\_

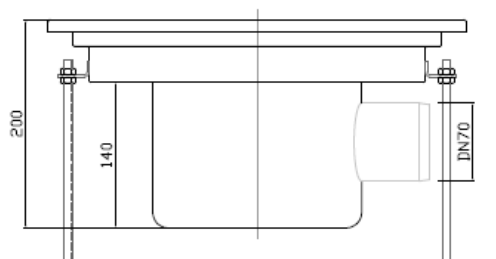


Experience the Excellence  
[www.electroluxprofessional.com](http://www.electroluxprofessional.com)  
ELUX\_EMAIL

Front

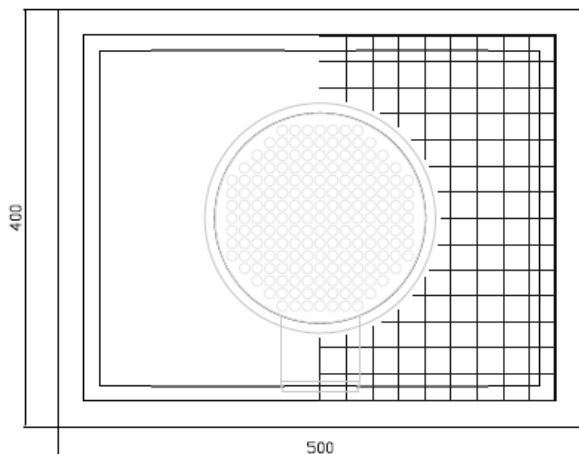


Side



D = Drain

Top



### Key Information:

External dimensions, Width:	
328066 (FDD4050)	500 mm
External dimensions, Depth:	400 mm
External dimensions, Height:	200 mm
Net weight:	10 kg